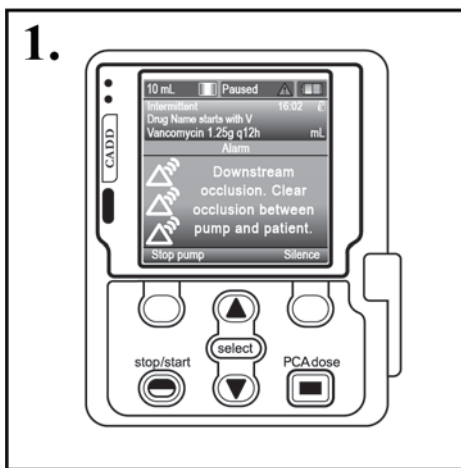
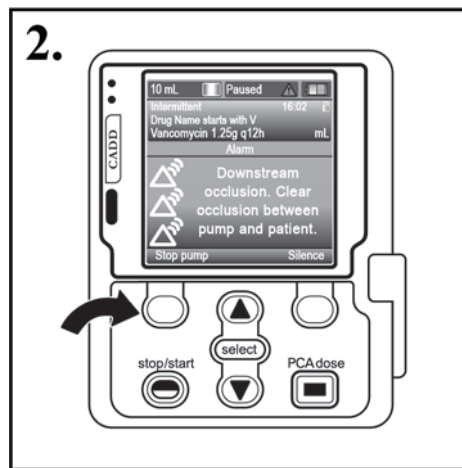


CADD Solis Alarm Tip Sheet

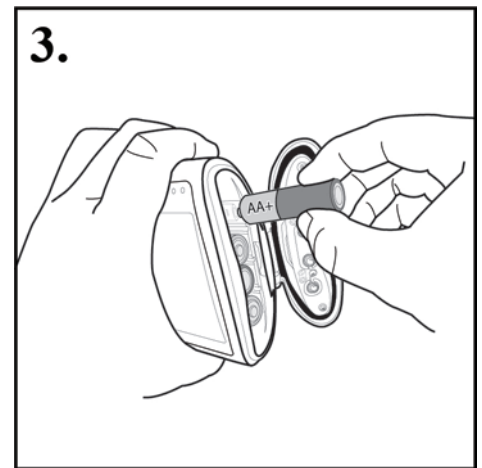
OPTION 1: Turn Off Alarm/Stop Infusion



- Alarm occurs



- Press 'Stop Pump'



Power down pump:

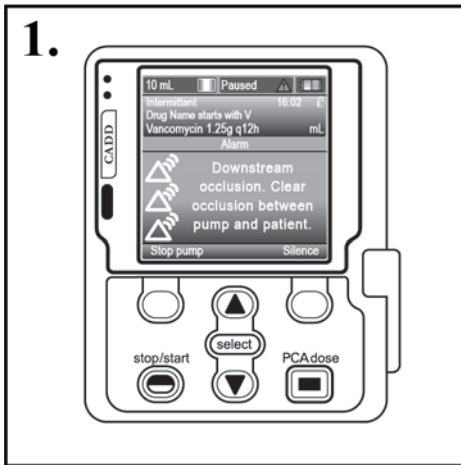
- Pump will be stopped
- Remove batteries
- Call health unit

Call Health Unit:

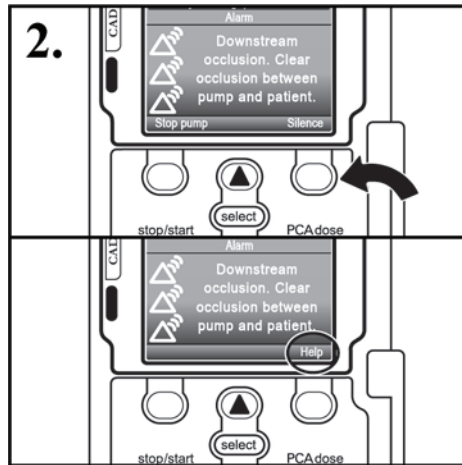
Monday - Friday: # _____

Weekends/Evenings/Holidays: # _____

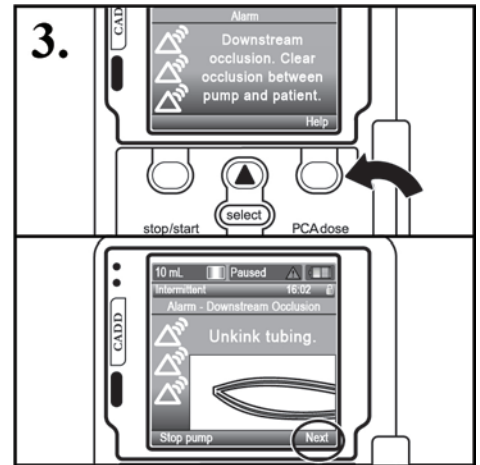
OPTION 2: Solve Alarm/Continue Infusion



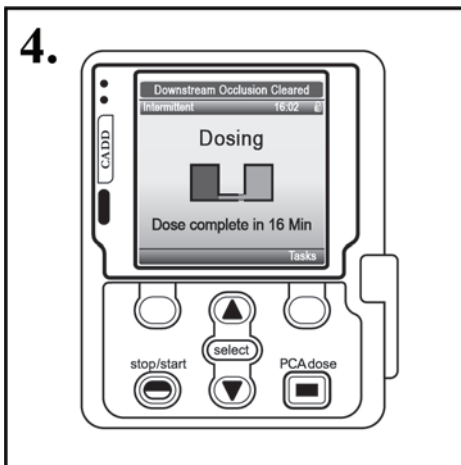
- Alarm occurs



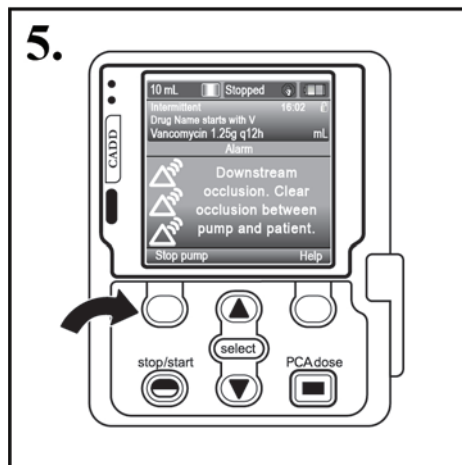
- Press 'Silence'
- Silence becomes 'Help'



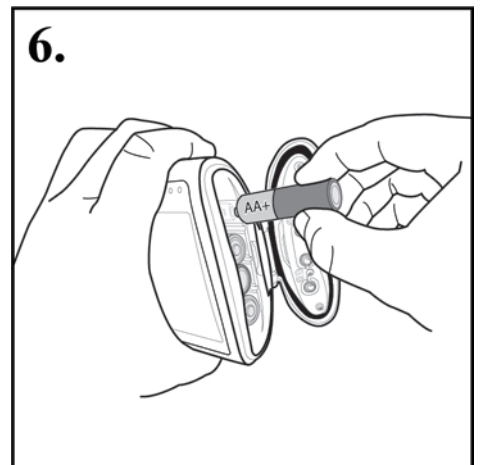
- Press 'Help' button
- Help becomes 'Next'
- Keep pressing 'Next' to get to help screens.
- Try to solve problem (eg. kink, move arm, clamp)



- If blockage is fixed, pump will start running again



- If unable to fix, press 'Stop pump'



Power down pump:

- Pump will be stopped
- Remove batteries
- Call health unit

For more copies, go online at <http://vch.eduhealth.ca> or email pthem@vch.ca and quote Catalogue No. FA.200.A76
© Vancouver Coastal Health, October 2018

The information in this document is intended solely for the person to whom it was given by the health care team.
www.vch.ca